

Inspection System: STS-40M

D40M Camera Accessories

Lenses: Non-browning radiation tolerant glass



Parameters	L40-6S	L40-17S	L40-10	H40-ZM
Focal lens	6 mm	17 mm	10 mm	15-72 mm
Optical/analog zoom ratio	1x/2x	1x/2x	1x/2x	5x/2x
Sensitivity	32 lx	16 lx	16 lx	24 lx
Diagonal angle of view (air/water)	82° / 59°	34° / 26°	56° / 41°	9° - 43° / 17° - 32°
Iris	2.8-16	1.4-16	1-8	2.8-16
	<ul style="list-style-type: none">• Wide viewing angle;• Extended depth of view;• No distortion (fisheye effect).	<ul style="list-style-type: none">• Narrow viewing angle;• High quality image;• No distortion (fisheye effect);• Perfect for close-up inspection	<ul style="list-style-type: none">• Standard viewing angle;• Extended depth of view;• Perfect for close-up inspection.	<ul style="list-style-type: none">• Changing angle of view (5x optical zoom);• High quality image;• No distortion (fisheye effect).

Inspection System: STS-40M



D40M Camera Accessories

Heads: frontal view



Parameters	H40-00	H40-01SM	H40-02SM	H40-03S
Operating distance range (air), mm	20 – ∞	35 – ∞	20 – ∞	20 – ∞
Operating distance range (water), mm	30 – ∞	50 – ∞	30 – ∞	30 – ∞
Lights operating distance (air), mm	-	35-3000	50-500	100-3000
Lights operating distance (water), mm	-	35-1000	50-350	100-1000
Diameter, mm	40.5	40.5	40.5	70
	<ul style="list-style-type: none"> Acryl glass; No LED illumination; Compatible with L40-6S, L40-17S 	<ul style="list-style-type: none"> Radiation tolerant glass or acryl; LED illumination – up to 3 m in air; Compatible with L40-17S. 	<ul style="list-style-type: none"> Radiation tolerant glass or acryl; LED illumination – up to 0.5 m in air; Compatible with L40-6S. 	<ul style="list-style-type: none"> Radiation tolerant glass; LED illumination – up to 3 m in air; Compatible with L40-6S.

Inspection System: STS-40M



D40M Camera Accessories

Heads: radial & dual-view



Parameters	H40-05SM (radial view)	H40-06SM (radial view)	H40-10 (radial view)	H40-FRV (dual-view)
Operating distance range (air), mm	10 – ∞	10 – ∞	45 – ∞	10 – ∞
Operating distance range (water), mm	13.3 – ∞	13.3 – ∞	60 – ∞	13.3 – ∞
Lights operating distance (air), mm	35-1000	35-500	50-600	60 – 4000 (Axial Mode) 30 – 2000 (Radial Mode)
Lights operating distance (water), mm	35-400	35-200	50-400	60 – 1200 (Axial Mode) 30 – 750 (Radial Mode)
Diameter, mm	40.5	40.5	60	65
	<ul style="list-style-type: none"> • Radiation tolerant glass; • LED illumination – up to 1m in air; • Compatible with L40-17S. 	<ul style="list-style-type: none"> • Radiation tolerant glass; • LED illumination – up to 0.5 m in air; • Compatible with L40-17S. 	<ul style="list-style-type: none"> • Radiation tolerant glass; • LED illumination – up to 0.6 m in air; • Compatible with L40-10. 	<ul style="list-style-type: none"> • Frontal/radial view mode remote switching; • Radiation tolerant glass; • LED illumination – up to 4 m in air; • Compatible with L40-17S.

Inspection System: STS-40M

D40M Camera Accessories



Rotation unit R40S

- Rotation angle 360°;
- Rotation speed – 8°/s;
- Diameter – 40.5 mm;
- Length – 166 mm.



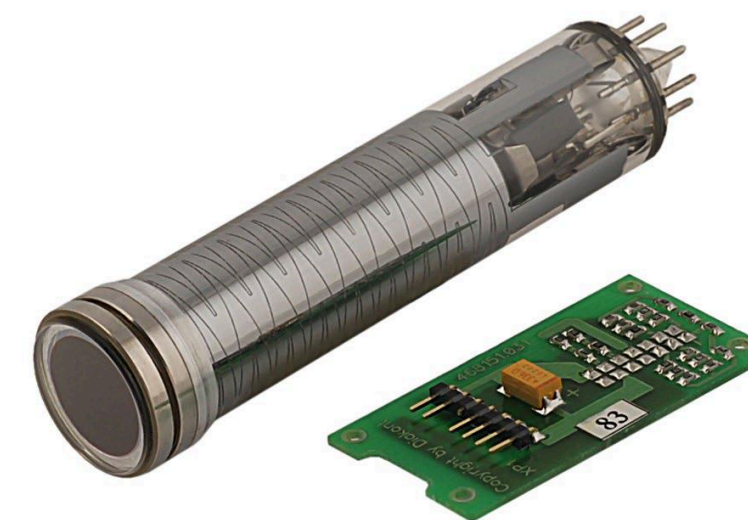
Extended radiation tolerance vidicon tube

The camera system based on the D40M camera with vidicon tube has extended radiation tolerance that makes it useful in areas with high levels of gamma radiation. It can operate at the operational dose rate up to 2×10^6 Rad/h and integral dose up to 2×10^8 Rad.



Protective covers

Protective cover with a cable mounting can help in speeding up the inspection. It also allows to change the view direction.



Complex supply of components

The vidicon transmitting tube, as the main component of the D40M camera, is supplied complete with a tube mode adjustment board and is preconfigured before shipment to the customer. This allows one to replace the transmitting tubes on the 'Plug and play' principle avoiding the time-consuming on-site setup and saving hours of personnel working time.

At the cutting-edge of kinematic technologies

Inspection System: STS-40M



D40M Camera Accessories



Portable remote controller PU-U

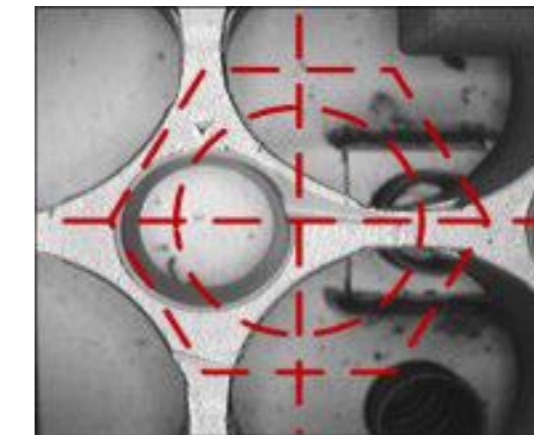
Allows operators to work remotely when there is no option of controlling the system being near it. The system can also be connected remotely via serial or other network interface outside of the containment.



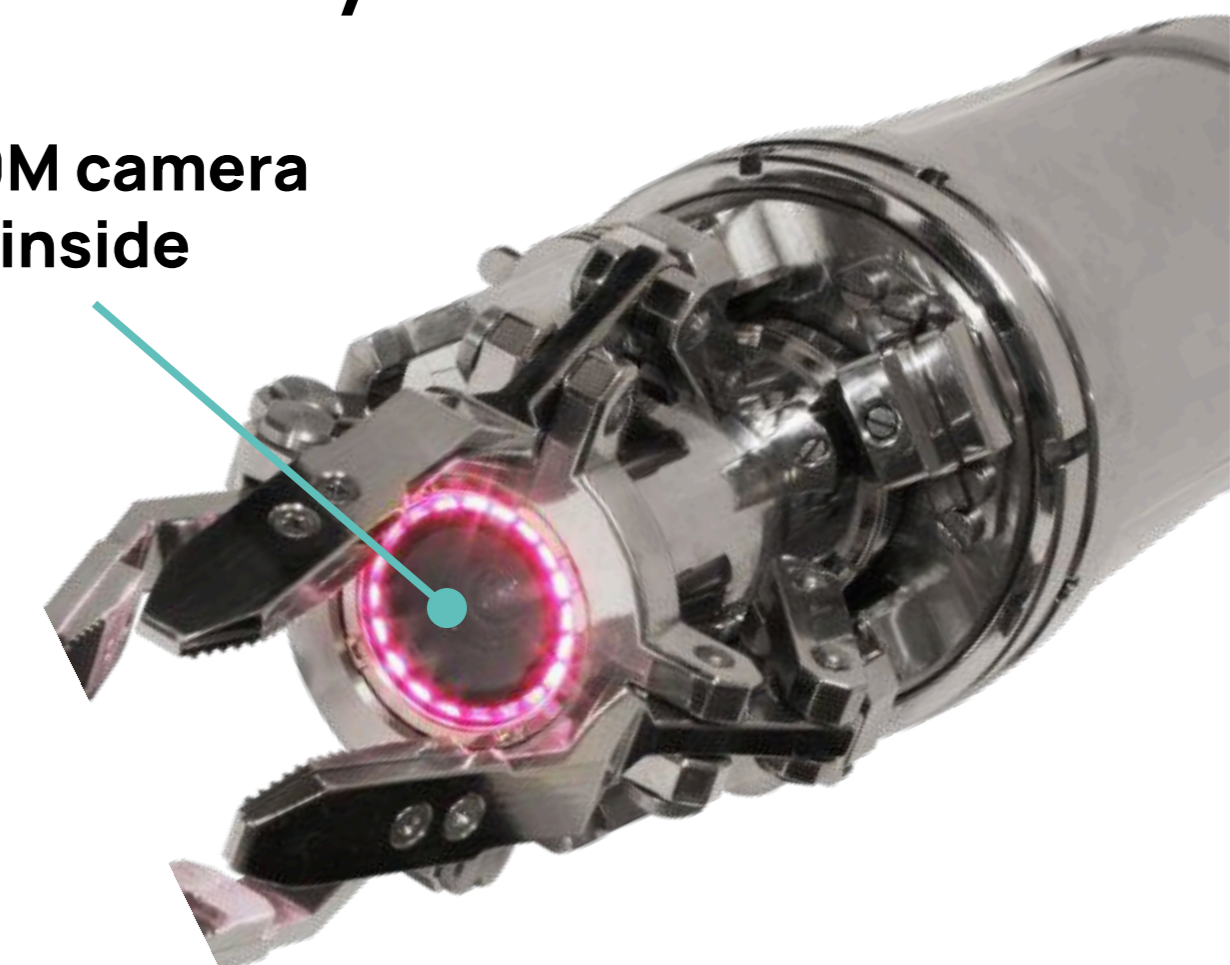
D40 console

The D40 console includes a camera control unit, a monitor, a digital video recorder (DVR), and a portable remote control panel integrated into a rugged, compact housing for easy portability.

Foreign object removal system



D40M camera inside



At the cutting-edge of kinematic technologies